



# Idaho Gold Producer.

**New Jersey Mining Company** is a gold producer headquartered in north Idaho – focused on increasing cash flows through a portfolio of advanced stage and production-based exploration assets.

## Production

### Golden Chest Mine

- Open pit and underground operations underway.
- Third Quarter 2019 AISC \$1,071
- 43-101 Resource: 254,000 oz M&I / 223,000 oz. Inferred
- More than \$13M invested in infrastructure, exploration & development

## Exploration

### Central Idaho Eastern Star Project

- Historic Elk City Mining District
- Near surface high grade-target
- Near highway access
- High voltage power

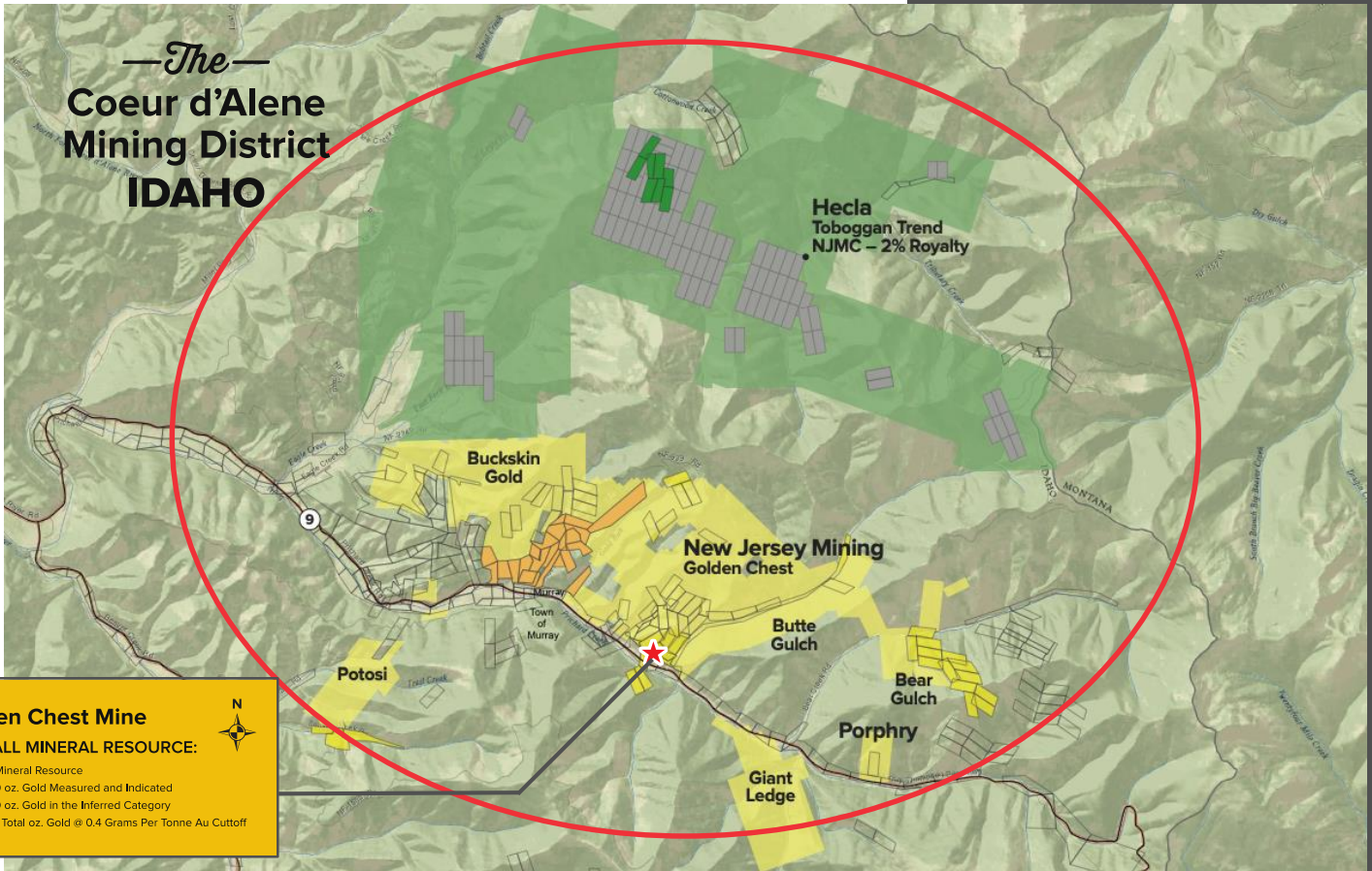
## Pre-Development & Production-Based Exploration

### Murray Gold Belt

- New Klondike surface pit
- Layback to current surface pit
- Paymaster underground

### Butte Highlands, Montana

- Fully permitted underground gold mine
- NJMC interest is carried to production, with its share of costs paid from future production



## Experienced Team

- Demonstrated ability to advance business objectives and projects, taking advantage of difficult market conditions to acquire and consolidate assets at reduced cost with minimal dilution.
- Proven Open-pit and underground mining and milling operations expertise.
- Shareholder-Focused Management and Directors, holding over 15% of issued and outstanding shares Acquired through open market purchases and financings.

## Management and Directors

**John Swallow**  
 CEO, President & Director

**Grant Brackebusch**  
 Vice President & Director

**Rob Morgan**  
 Vice President, Exploration

**Kevin Shiell**  
 Director

**Monique Hayes**  
 Corp. Secretary/Investor Relations

- Murray Gold Belt
- NJMC Patented
- NJMC Patented-Under-Contract
- NJMC Unpatented Claims
- Hecla Unpatented
- Hecla Unpatented-NJMC Royalty
- Private Land

## Investor Relations

Monique Hayes  
 208-625-9001